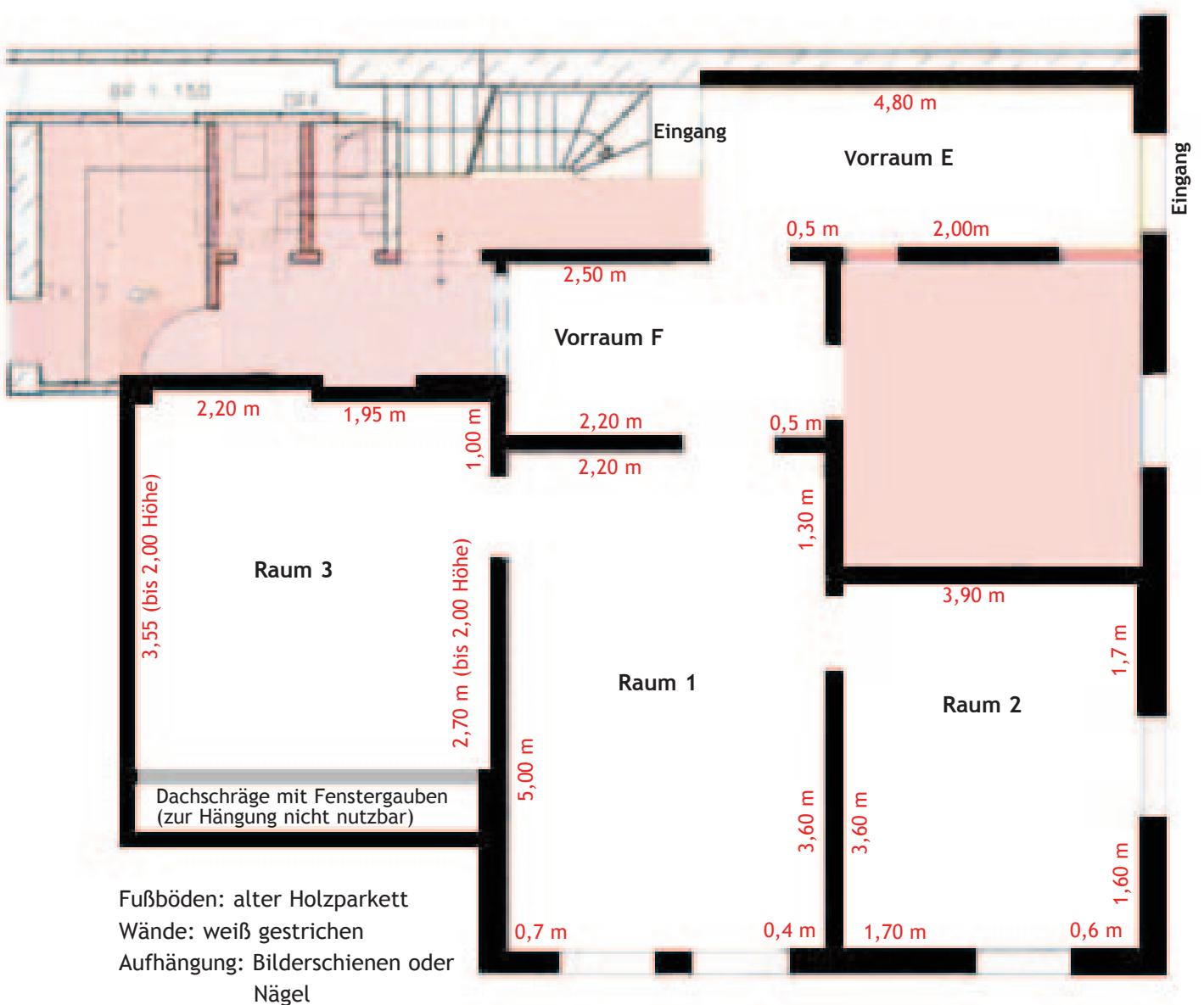




Grundriss der Ausstellungsräume (1.OG)

Raum	Fläche qm	lfd.m. Hängewände	Raumhöhe	sonstiges
Raum 1	23 qm	13,5 m	2.63 m	
Raum 2	18 qm	11,5 m	2.63 m	
Raum 3	15 qm	11,5 m	2,63 m	Dachschräge
Vorraum E	9 qm	7,3 m	2,62 m	Eingang
Vorraum F	7 qm	6,0 m	2,63 m	
	72 qm	ca. 49,7 m		





Galerie-Räume 1-2 / Kultur Am Kelterberg Vaihingen e.V.



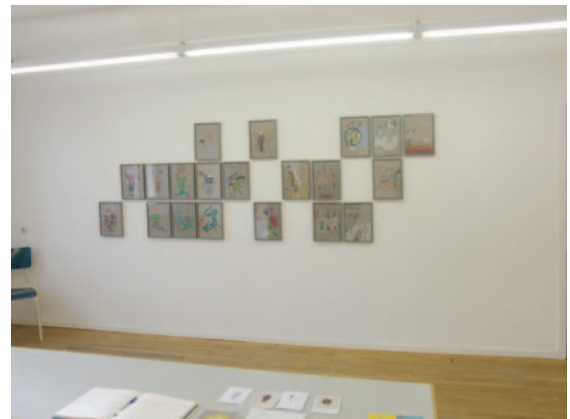
Raum 1



Raum 1



Raum 1



Raum 1



Raum 2



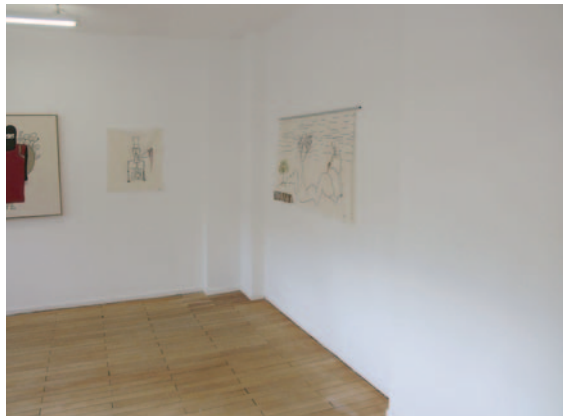
Raum 2



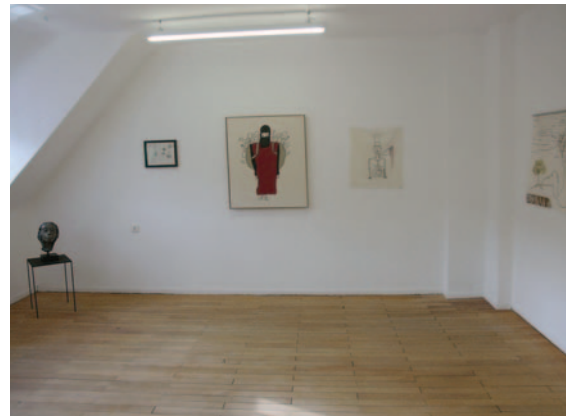
Raum 2



Galerie-Räume 3 - E,F2 / Kultur Am Kelterberg Vaihingen e.V.



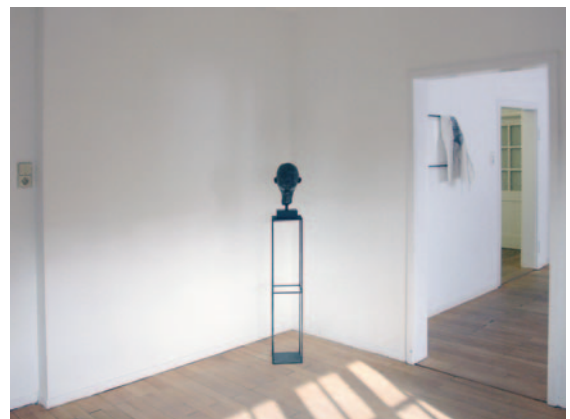
Raum 3



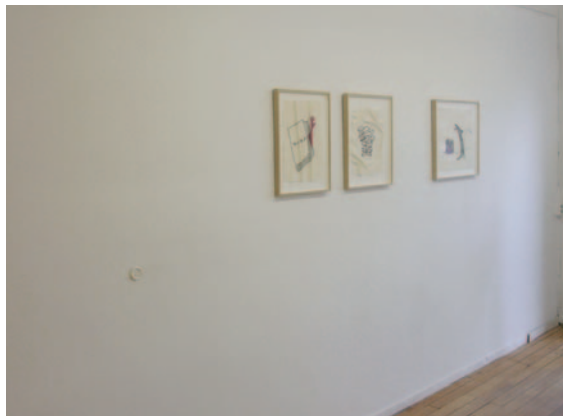
Raum 3



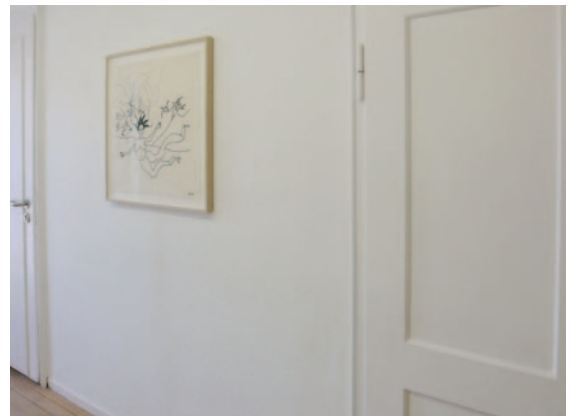
Raum 3



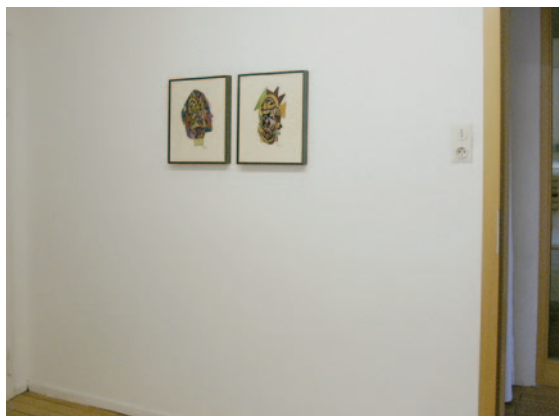
Raum 3



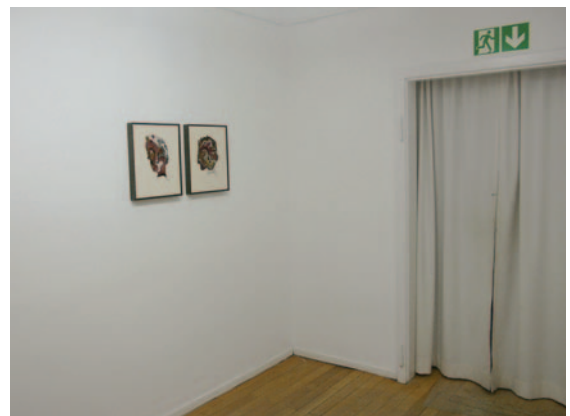
Raum E



Raum E



Raum F



Raum F